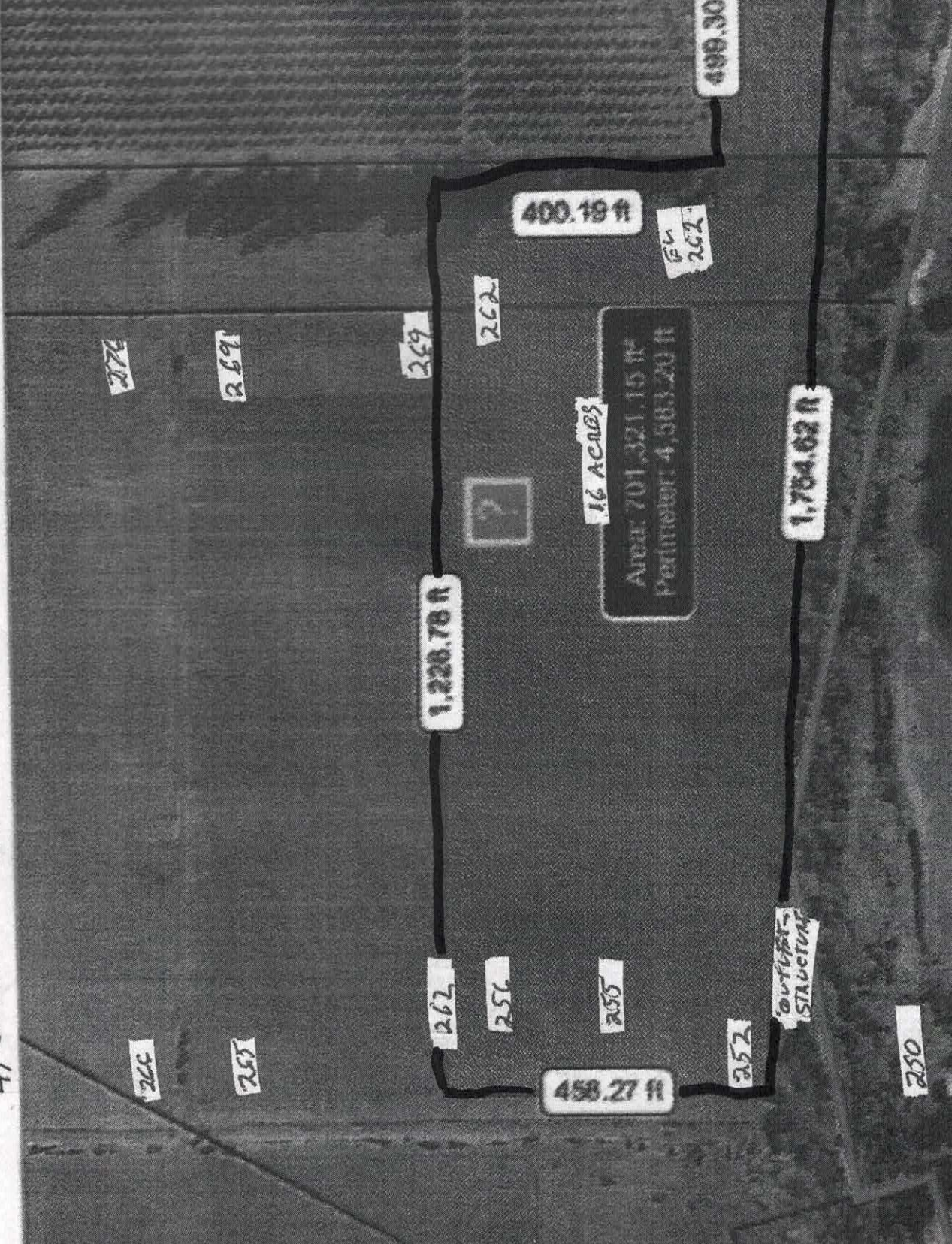


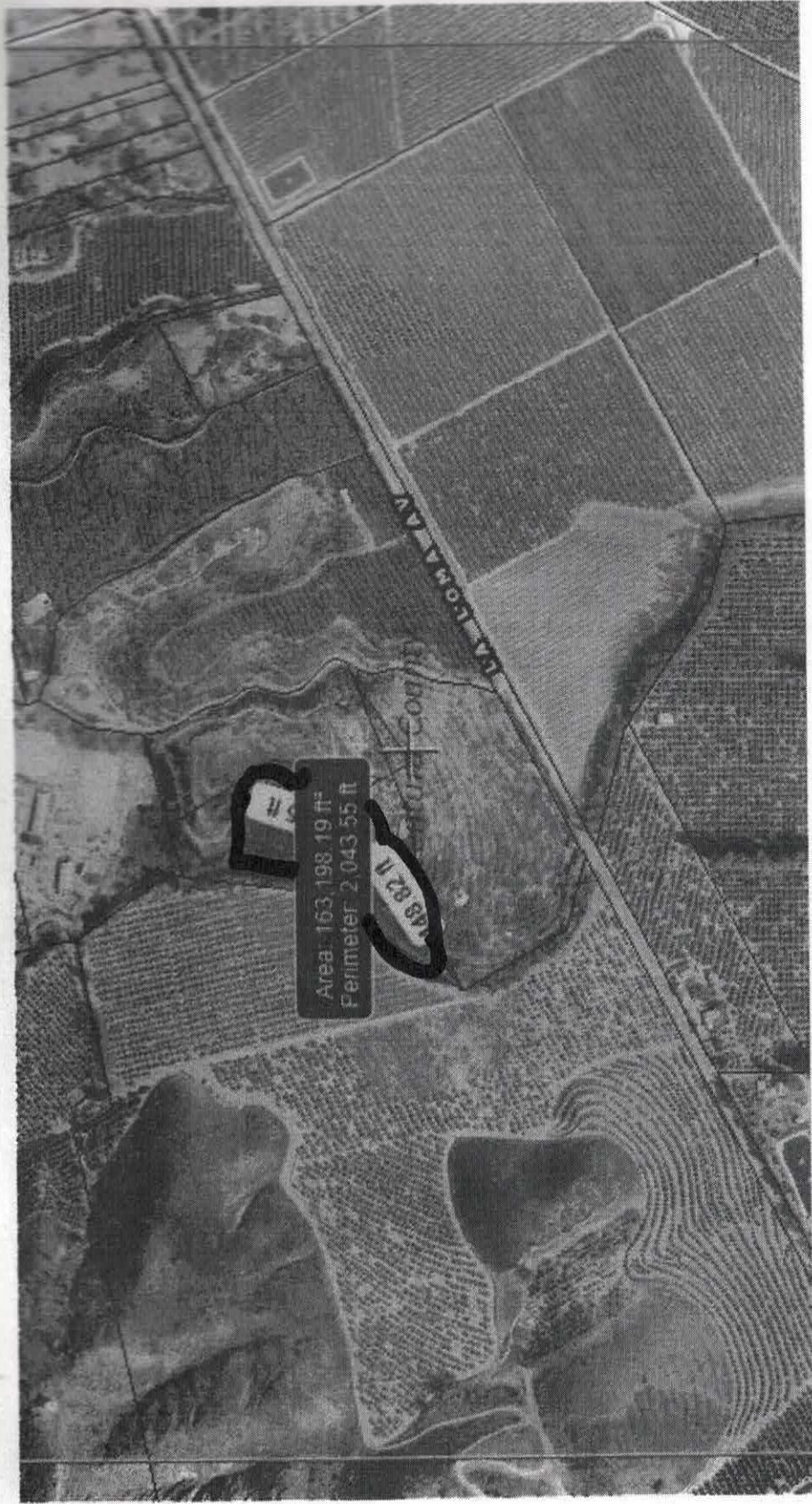
PROJECT 1. SUMMER PARKWAY & WINDY CREEK DIVERSION BRIDGE

SCOPE: 1) BUILD DIVERSION STRUCTURE WITH IN FLATABLE DAM 260 EL
 2) CONSTRUCT PERIMETER RETAINING BEAM AT PERIMETER (TOP DAM 263, DOOR TO 250 EL)
 3) REMOVE WHOLE ARE WITHIN BEAM TO EL. 250
 4) CONSTRUCT EMERGENCY OUTLET STRUCTURE (TOP @ 260 EL, DOOR TO 250 EL)

EXCHANGE:
 60 AF/RAIN
 VENT



EL 260
 INLET STRUCTURE



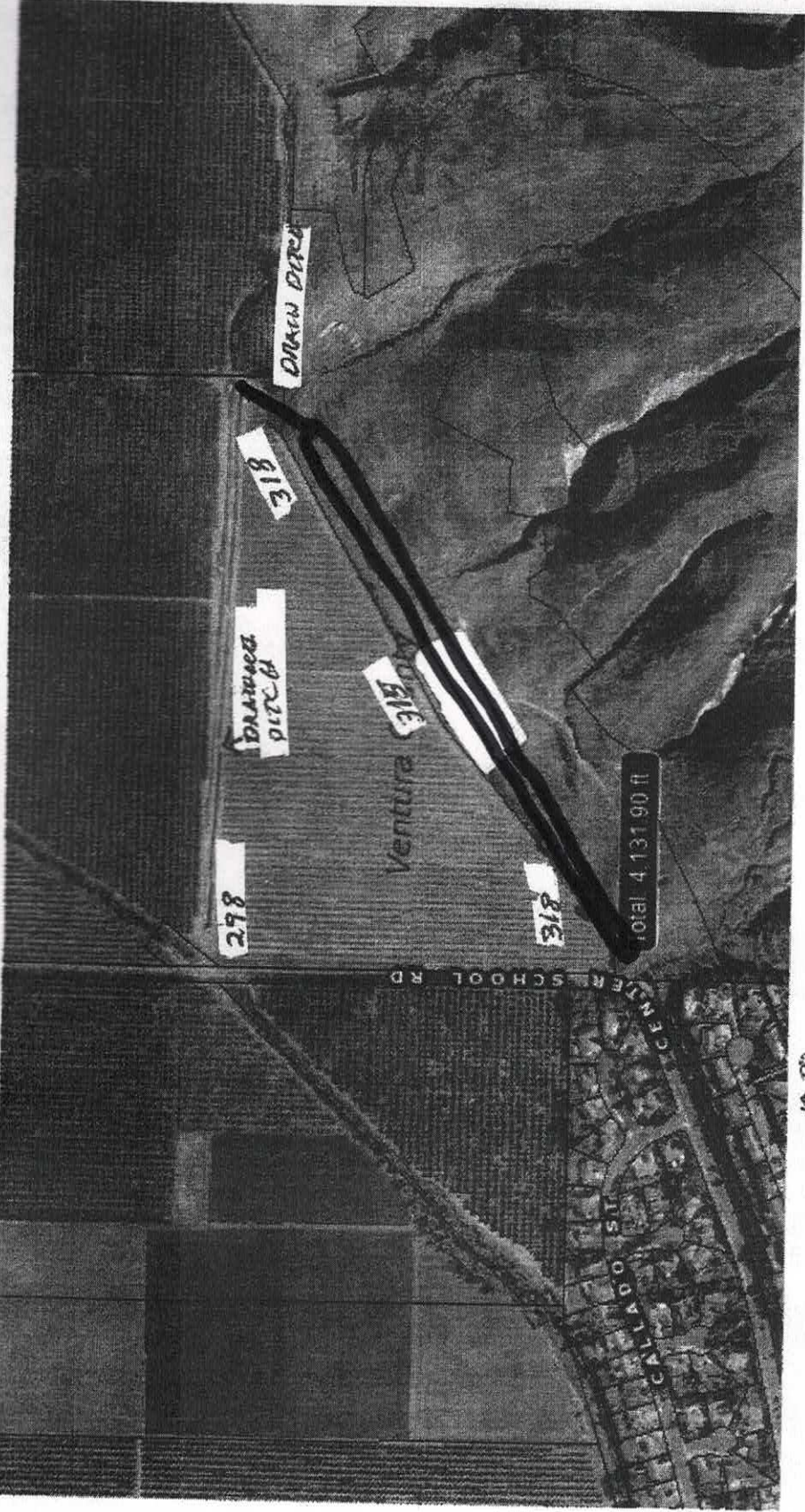
PROJECT 21 ~~BARANCA~~ BARANCA CONVERTED INTO DETENTION BASINS PLAN

SCOPE: CONVERT BARANCA TO RETENTION BASIN

$$163,200 \times 20' \text{ DEEP} = \frac{3,264,000 \text{ CF}}{43,560 \text{ CF/AE}} = 75 \text{ AE PER RAIN EVENT}$$

COST: 1 MONTH GRADING + EXIST STRUCTURE = \$350,000
 \$150,000 200,000

PROJECT 3 . BASE OF MOUNTAIN POTENTIAL BASINS



SIZE 2,000' LONG, 20' WIDE, 10' TALL

COST: 1 MONTH GRADING + LAND
EST: 150,000⁰⁰

$$2,000 \times 15 \times 10 = 300,000 \text{ CF} \\ \frac{300,000 \text{ CF}}{40,360 \text{ CF/AF}} = 6.9 \text{ AF} \\ \text{PER RAIN EVENT}$$

COST SAVING TO COUNTY OF VENTURA
FOR NOT CLEANING DRAINAGE DITCH
EVERY YEAR ALONG CENTER SCHOOL ROAD

2 PUMP TRUCKS
2 EXCAVATORS
2 FLAGGERS

FOR 2 DAYS EVERY YEAR

