

LAS POSAS BASIN POLICY ADVISORY COMMITTEE MEETING

NOTICE OF MEETING

NOTICE IS HEREBY GIVEN that the Las Posas Basin Policy Advisory Committee (PAC) will hold a HYBRID meeting at 3:00 P.M. on Thursday, May 1, 2025.

In Person:

Calleguas Municipal Water District, 2100 Olsen Road, Thousand Oaks, CA 91360

via ZOOM:

<https://us06web.zoom.us/j/84816327542?pwd=Y-bN4zt674FOphU6wRyxXw9swYTgvA.9bNuXf3yWWBZyrae>

Webinar ID: 848 1632 7542 | Passcode: 400774

AGENDA

A. Call to Order

B. Roll Call

C. Agenda Review

D. Public Comments

E. PAC Member Comments

F. Regular Agenda

1. Approve the Minutes of the April 17, 2025 Regular Meeting

2. Overuse Assessment

On April 10, Watermaster conveyed the attached memo to the PAC, relating to the establishment of an overuse assessment in the LPV. At its April 17, 2025 meeting, the PAC voted to pin the overuse assessment to the Calleguas Municipal Water District Tier 1 rate. When putting the recommendation report together, the PAC Fiscal Committee discussed whether it would be more appropriate to pin the overuse assessment to the retail cost of water in the Las Posas Valley; as Calleguas is a wholesaler, its Tier 1 rate does not capture the full cost of delivering an acre foot of water to end users in the basin. The PAC will discuss whether to change the recommendation or proceed as determined on April 17. A draft recommendation report is attached.

3. Surplus Budget

On April 10, Watermaster conveyed the attached memo to the PAC for input on policy decisions related to surplus Watermaster budget. At its April 17, 2025 regular meeting, the PAC discussed whether the surplus amount should result in an elimination of the fourth quarter Basin Assessment, serve to reduce future years' Basin Assessments, or be kept in a reserve account to fund future Basin replenishment projects. There was general agreement that the latter was the preferred course of action, as an effort to begin building a replenishment fund so there is money to purchase water when it is necessary

and available. The PAC will discuss the issue again and arrive at a recommendation for the Watermaster ahead of the May 6 Watermaster Fiscal Committee meeting.

4. Basin Optimization Yield Study

At its April 17, 2025 meeting, the PAC requested the PAC Administrator write a letter to the Watermaster Board asking for more information on the costs and likelihood of getting the updated information from UWCD within a reasonable timeframe. That letter has been submitted and is attached for the PAC's information.

The PAC also directed the Chair to make comments at the FCGMA/Watermaster Board meeting on April 23 regarding the PAC's preference that United do the modeling, echoing the letter the PAC sent to Watermaster on April 1. The Chair made those comments.

The PAC may discuss this item.

5. Carryover and Transfers

Sections 4.11 and 4.12 of the Judgment contemplate, respectively, carryover and transfers. The PAC will discuss the mechanics of the two actions. The Watermaster Transfer Request Form is attached for reference.

G. PAC Subcommittee Reports

PAC representatives on subcommittees will provide reports

1. Operations Subcommittee
2. Executive Subcommittee
3. Fiscal Subcommittee
4. TAC Subcommittee

H. Written Communication

None

I. Future Agenda Items

The PAC will consider items for future agendas.

J. Adjourn

Attachments:

F-1. PAC 2025-03-20 Meeting Minutes

F-2a. Watermaster Memorandum to PAC (April 10, 2025) – Overuse Assessment

F-2b. Draft Recommendation Report re: Overuse Assessment

F-3a. Watermaster Memorandum to PAC (April 10, 2025) – Watermaster Budget Surplus

F-3b. Draft PAC Rec Report Re: Surplus Budget Dispensation

F-4. PAC letter to Watermaster regarding the West Las Posas Management Area groundwater model

F-5. Watermaster Transfer Request Form

LAS POSAS VALLEY BASIN POLICY ADVISORY COMMITTEE

Meeting Minutes for April 17, 2025

The Las Posas Valley Basin Policy Advisory Committee (PAC) held a regular hybrid meeting at 3:00 PM on Thursday, April 17, 2025, at Calleguas Municipal Water District, 2100 Olsen Road, Thousand Oaks, CA, and via Zoom.

A. Call to Order: Chair Ian Prichard called the meeting to order at 3:04 PM.

B. Roll Call:

The following PAC members were present:

1. Calleguas Municipal Water District – Ian Prichard, Chair
2. West Las Posas Large Agriculture – Rob Grether, Vice-chair
3. Commercial – Art Aseo (via Zoom – 3:22 PM arrival)
4. East Las Posas Large Agriculture – David Schwabauer (via Zoom)
5. East Las Posas Small Agriculture – Josh Waters
6. East Las Posas Mutual Water Company – Laurel Servin (via Zoom – 3:40 PM arrival)
7. West Las Posas Small Agriculture – Richard Cavaletto
8. Watermaster (non-voting) – Farai Kaseke (via Zoom)

The following PAC members were absent:

1. Zone Mutual Water Company – John Menne
2. Ventura County Waterworks Districts 1 and 19 – Jeff Palmer
3. West Las Posas Mutual Water Company – Steven Murata

C. Agenda Review: To accommodate a scheduling request from the presenter, Regular Agenda Item F.4 was moved up to the F.2 time slot. No other changes to the agenda were requested.

D. Public Comments: There were no public comments.

E. PAC Member Comments: There were no PAC member comments.

F. Regular Agenda

1. Approve the Minutes of the March 20, 2025, Regular PAC Meeting

David Schwabauer moved to approve the minutes as stated for the March 20, 2025, meeting; Vice-chair Grether seconded the motion. The motion passed with a vote of 5-Ayes; 0-Nays; 0-Abstentions; 5-Absent.

2. Basin Optimization Yield Study (BOYS) – Preferred Modeling Alternative and Impacts to Schedule

In a memorandum dated April 3, 2025, Watermaster advised the PAC that they have been unable to obtain access to United Water Conservation District's (UWCD) model files and/or modeling services for the completion of the Basin Optimization Yield Study, therefore they must develop alternatives to using the UWCD information to complete the BOYS. Watermaster requested PAC committee consultation on the resulting policy implications and impact to the timeline of the BOYS, considering specific modeling alternatives to estimate Basin Optimization Yield and Rampdown Rate calculations. The Watermaster has requested the PAC provide its Recommendation Report by May 9, 2025.

F-1 - PAC 04-17-2025 Meeting Minutes

PAC Administrator Tony Morgan provided a presentation on the pros and cons of the modeling alternatives described by Dudek. Three options were presented for consideration in estimating Basin Optimization Yield and Rampdown Rate as follows: 1) Use existing GSP evaluation model simulations; or 2) Use existing historical groundwater elevation measurements and extraction reports; or 3) Use existing United Water Conservation District (UWCD) model files to have Dudek run new modeling scenarios (it is important to note that the existing UWCD modeling information currently available for Option 3 is from 2019).

Dudek would be able to perform the required analyses of existing data in Options 1 and 2, but the PAC agreed that, as these methods would rely on data that is not current, they would not produce meaningful results beyond what is already contained in the GSP. For Option 3, a change to the Somis fault was acknowledged and is considered a substantial change that would impact the modeling results and future project selection.

Tony Morgan and the PAC agreed that the ideal solution is to have an enhanced version of Option 3 where Watermaster and Dudek would have full access to the current and ongoing LPV Basin modeling data from UWCD for use now and in the future for modeling and decision-making purposes. This would allow UWCD, Dudek, or any future consultants to run new modeling scenarios at will, and to include changes affecting the LPV Basin such as the Somis fault change or any changes that require model recalibration.

The PAC and Watermaster discussed the current situation regarding the delays in obtaining updated access to UWCD model(s) and/or modeling files due to an impasse in contract negotiations between UWCD and FCGMA. Watermaster reported that negotiations with UWCD are ongoing but there is no estimated date of completion.

The PAC agreed that current and accurate data and modeling results are imperative to ensure successful evaluation, BOYS reporting, and Rampdown Rate calculations, if required, and they emphasized the urgent need to get the contract with UWCD finalized. The PAC members agreed that it is worthwhile to spend the time and money required to get current, reliable data for the BOYS and Rampdown Rate evaluation, but PAC would like to have more information about the costs and time required for the various scenarios before the committee can make its final recommendation.

Tony Morgan will prepare a letter to the Watermaster Board requesting additional information from Dudek regarding its anticipated fees and timing to upgrade the periodic model to extend the modeling period to 2024, refine understanding of the impact of in-lieu deliveries, and perform the model recalibration and validation, sensitivity, and uncertainty analyses.

The PAC authorized Chair Prichard to share the committee's comments and concerns at the FCGMA/Watermaster monthly board meeting on April 23, 2025.

Watermaster has been asked to provide a response before May 1, 2025, the date of the next PAC meeting, so the committee can discuss the information and complete its Recommendation Report by May 9, 2025.

3. Budget Discussion

On April 10, 2025, Watermaster submitted two budget-related items to the PAC for committee consultation as follows:

- a) Committee Consultation on Surplus Budget

F-1 - PAC 04-17-2025 Meeting Minutes

Watermaster requested a policy recommendation on or before May 6, 2025, for discussion at the FCGMA Fiscal Committee meeting on that date. A year-to-date budget analysis by Watermaster shows a surplus in the Watermaster budget for the current fiscal year. The PAC is being asked to provide a policy recommendation on the dispensation of surplus Watermaster budget. The PAC discussed whether the surplus amount should result in an elimination of the fourth quarter Basin Assessment, serve to reduce future years' Basin Assessments, or be kept in a reserve account to fund future Basin replenishment projects. There was a discussion about these options and there were varying opinions as to the best solution. A decision on this item was deferred until the next PAC meeting on May 1, 2025; Chair Prichard will draft a letter for the PAC's consideration at the meeting.

b) Committee Consultation for Establishment of an Overuse Assessment for Las Posas Valley Basin

The Judgment requires committee consultation on the Overuse Assessment to be charged to Water Rights Holders who exceed their Annual Allocation as defined in the Judgment. PAC feedback is requested by May 9, 2025. The PAC decided on a policy recommendation for the Overuse Assessment: Vice-chair Grether made a motion to submit a policy recommendation to set the overuse assessment at the prevailing Calleguas Municipal Water District Tier 1 water rate. Richard Cavaletto seconded the motion which passed with a vote of 7-Ayes; 0-Nays; 0-Abstentions; 3-Absent. Chair Prichard will confer with the PAC financial sub-committee and together they will finalize the Recommendation Report for submission to Watermaster.

4. Calleguas Municipal Water District (CMWD) Background Presentation

Chair Prichard, Deputy General Manager of Calleguas Municipal Water District, gave a presentation detailing the history of CMWD, the services and service areas that it supports, and its water resource development plans. Attendees expressed appreciation for the information provided as it gave viewers a greater understanding of the LPV Basin and the potential benefits and challenges associated with Basin replenishment projects that are under consideration.

G. PAC Subcommittee Reports:

1. Operations Subcommittee: An Operations Committee meeting was held on April 7, 2025; the meeting was largely a discussion on the projects and management actions that will help the Agency meet its sustainability goals as GSA for the basins.
2. Executive Subcommittee: Meeting was cancelled; nothing to report.
3. Fiscal Subcommittee: An FCGMA/Watermaster Fiscal Committee meeting was held on April 15, 2025; the meeting was an ongoing budget development workshop.
4. TAC Subcommittee: A TAC meeting was held on April 15, 2025. Key points from that meeting were discussed during the presentation made by Tony Morgan in Regular Agenda Item F.2.

H. Written Communication: None.

I. Future Agenda Items:

1. The PAC will discuss the surplus amount in the Watermaster budget for the current fiscal year, and recommendation(s) for use of the funds or possible elimination of the 4th quarter Basin assessment.

F-1 - PAC 04-17-2025 Meeting Minutes

2. The PAC will discuss questions related to the administration of the Water Market in the LPV Basin and management of Annual Allocation Carryover.
3. The PAC will discuss the status of additional active wells on Sand Canyon Road which were recently identified as unauthorized or undocumented.

J. Adjournment: Chair Prichard adjourned the meeting at 6:27 PM, until the next regular hybrid PAC meeting which is scheduled for May 1, 2025, at 3:00 PM.

LAS POSAS BASIN
POLICY ADVISORY COMMITTEE

ITEM 4 - BASIN OPTIMIZATION YIELD STUDY - PREFERRED
MODELING ALTERNATIVE AND IMPACTS TO SCHEDULE

17 April 2025

ITEM 4 - BASIN OPTIMIZATION YIELD STUDY - PREFERRED MODELING ALTERNATIVE AND IMPACTS TO SCHEDULE

2

REQUEST FROM WATERMASTER

...PAC consultation on policy implications of two points...

...PAC Recommendation Report to WM by 09 May 2025...

Preferred Alternative. Whether Watermaster should use the **UWCD Periodic Evaluation model files** to run scenarios for preparation of the Basin Optimization Yield Study rather than estimating the Basin Optimization Yield and Rampdown (i) using **GSP Periodic Evaluation Model** simulations or (ii) using **Historical Groundwater Elevation Measurements and Extraction Reports**?

Schedule Impact. Whether using the UWCD Periodic Evaluation model files to complete the Basin Optimization Yield Study in April 2026 for adoption at the May 2026 Watermaster Board of Directors meeting, approximately four months before the start of Water Year 2026 (October 1, 2026 through September 30, 2027), is a reasonable alternative for timely completion of the Basin Optimization Yield Study?

ITEM 4 - BASIN OPTIMIZATION YIELD STUDY - PREFERRED MODELING ALTERNATIVE AND IMPACTS TO SCHEDULE	
3	
ALTERNATIVES	
23 Dec 2024 Memo from WM to LPV PAC	
31 Mar 2025 Memo from Dudek to WM	
03 Apr 2025 Memo from WM to LPV PAC	
	<div>1. Estimation of Basin Optimization Yield and Rampdown Using GSP Evaluation Model Simulations - This alternative would <u>utilize model results presented in the LPV Groundwater Sustainability Plan (GSP) Periodic Evaluation</u> and may require additional technical analyses to characterize the impacts of allocation distributions on the WLPMA yield.</div> <div>2. Estimation of Basin Optimization Yield and Rampdown Using Historical Groundwater Elevation Measurements and Extraction Reports - This alternative would consider the relationship between groundwater levels and pumping to estimate the WLPMA yield.</div> <div>3. Development of a New Numerical Groundwater Flow Model for the West Las Posas Management Area - This approach would cover the development of a new model for the WLPMA that is distinct from UWCD's Updated Coastal Plain Model. The model would be developed and maintained by FCGMA.</div> <div>4. Estimation of the BOY Using the UWCD Periodic Evaluation Model Files to Run New Scenarios - The baseline scenario would simulate groundwater conditions in the WLPMA through water year 2069 using the hydrologic period from 1930-1979, modified by DWR's 2070 central tendency climate change factors.</div>

ITEM 4 - BASIN OPTIMIZATION YIELD STUDY - PREFERRED MODELING ALTERNATIVE AND IMPACTS TO SCHEDULE	
4	
ALTERNATIVES	
ALTERNATIVE	DESCRIPTION
Estimation of Basin Optimization Yield and Rampdown Using GSP Evaluation Model Simulations	<div><div>• Use the output files provided by UWCD to develop correlations between the water budget components and the groundwater elevations simulated in the various scenarios. Correlations would then be used to estimate the anticipated groundwater elevations at individual wells in the WLPMA under the Operating Yield of 40,000 AFY, based on the distribution of groundwater production in the allocation schedule</div><div>• Impact of projects would be evaluated by changing the pumping distribution in the WLPMA from the Future Baseline with Projects Scenario modeled in the Periodic Evaluation of the LPV Basin GSP</div><div>• Correlations would be mapped onto the spatial change in pumping distribution and the resulting predicted groundwater elevations would be compared to those in the baseline analysis and MTs</div><div>• Difference between the operating yield and the highest estimated groundwater production rate that avoids undesirable results will be used as the basis for the Rampdown Rate calculation in the Judgment</div></div>

ITEM 4 - BASIN OPTIMIZATION YIELD STUDY - PREFERRED MODELING ALTERNATIVE AND IMPACTS TO SCHEDULE	
5	
ALTERNATIVES	
ALTERNATIVE	DESCRIPTION
Estimation of Basin Optimization Yield and Rampdown Using Historical Groundwater Elevation Measurements and Extraction Reports	<ul style="list-style-type: none">• Use observed historical data to develop correlations between GW elevations and water budget components, <u>not the results of the numerical groundwater model simulations</u>• Review historical changes in groundwater elevations across the monitoring network of groundwater wells• GW elevation changes would be compared to historical water budget inputs & outputs• Correlations developed from the historical data would be used to estimate the groundwater elevations at individual wells in the WLPMA under the Operating Yield of 40,000 AFY, based on the distribution of groundwater production in the allocation schedule

ITEM 4 - BASIN OPTIMIZATION YIELD STUDY - PREFERRED MODELING ALTERNATIVE AND IMPACTS TO SCHEDULE	
6	
ALTERNATIVES	
ALTERNATIVE	DESCRIPTION
Estimation of the BOY Using the UWCD Periodic Evaluation Model Files to Run New Scenarios	<ul style="list-style-type: none">• Baseline scenario would <u>simulate groundwater conditions in the WLPMA through water year 2069</u> using the hydrologic period from 1930-1979, modified by DWR's 2070 central tendency climate change factors• Groundwater withdrawals in the baseline model scenario would be set equal to the allocations in the Groundwater Allocation Schedule w/o projects• <u>Integrate projects</u> that were identified in the Draft Basin Optimization Plan as being practical, reasonable, and cost-effective to implement prior to 2040 using the same hydrology and groundwater pumping as the baseline scenario• Groundwater budgets, the change in groundwater in storage, and groundwater levels at key wells simulated in the projects scenario would be compared to those simulated in the baseline scenario in order to provide a quantitative estimate of Basin Optimization Project benefits

ITEM 4 - BASIN OPTIMIZATION YIELD STUDY - PREFERRED MODELING ALTERNATIVE AND IMPACTS TO SCHEDULE			
7			
ALTERNATIVES			
ALTERNATIVE	PROS	CONS	COMMENTS
Estimation of Basin Optimization Yield and Rampdown Using GSP Evaluation Model Simulations	<ul style="list-style-type: none">Model output files availableDudek can perform the analyses	<ul style="list-style-type: none">Does not run model - results may not be more informative than Periodic EvaluationMay not yield results needed for WM to set rampdownNot well suited to capture spatial variability in GW conditions	<ul style="list-style-type: none">Correlations of model outputs farther removed from actual GW conditions than modelChanging pumping distribution will impact GW flow not captured
Estimation of Basin Optimization Yield and Rampdown Using Historical Groundwater Elevation Measurements and Extraction Reports	<ul style="list-style-type: none">Results developed from observed data rather than modeled (simulated) dataDudek can perform the analyses	<ul style="list-style-type: none">Does not run model - results may not be more informative than Periodic EvaluationMay not yield results needed for WM to set rampdownNot well suited to capture spatial variability in GW conditionsSparse distribution of wells suitable for use in analyses	<ul style="list-style-type: none">Observed GW elevation changes compared to historical water budget inputs quantified in GSP
Estimation of the BOY Using the UWCD Periodic Evaluation Model Files to Run New Scenarios	<ul style="list-style-type: none">Model files availableDudek can perform modeling	<ul style="list-style-type: none">Documentation not available (2019 is latest version)UWCD's Surface Water Distribution Model not available (cannot update conjunctive use and GW pumping in OX & PV)Somis fault changed from NO FLOW to GENERAL HEAD Bdy (model recalibration needed) - in lieu projects proposed near faultModel validation or uncertainty quantification not possible	<ul style="list-style-type: none">use UWCD's Updated Coastal Plain Modelsimulate GW conditions in WLPMA

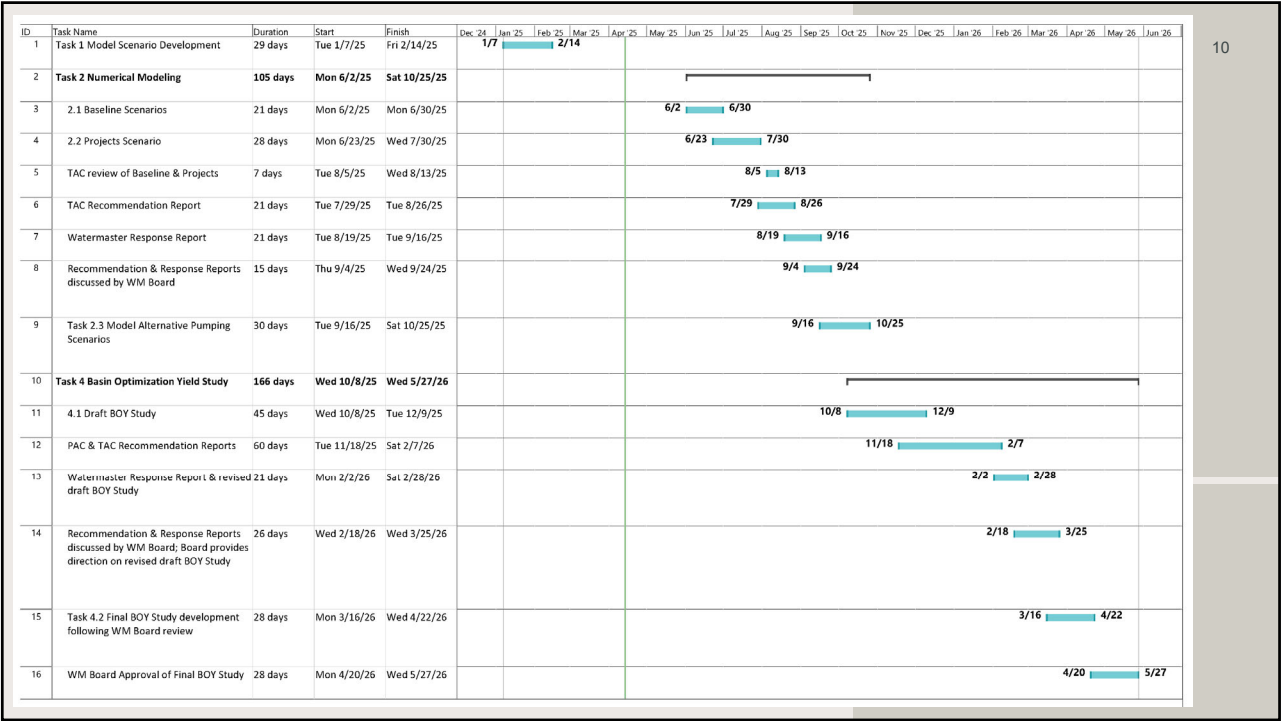
ITEM 4 - BASIN OPTIMIZATION YIELD STUDY - PREFERRED MODELING ALTERNATIVE AND IMPACTS TO SCHEDULE	
8	
ALTERNATIVES	
<div><div>1. Estimation of the BOY using the GSP evaluation model simulations.</div><div>2. Estimation of the BOY using historical groundwater elevation measurements and extraction reporting.</div><div>...3-6 month impact on the schedule, resulting in a completion date for the BOY Study in spring or summer 2026.</div></div>	BOY STUDY SCHEDULE
<div><div>4. Estimation of the BOY Using the UWCD Periodic Evaluation Model Files to Run New Scenarios *</div><div>...estimated to impact the study completion by about 5 months (Dec 2025 to May 2026)...</div><div>* Dudek preferred alternative</div></div>	

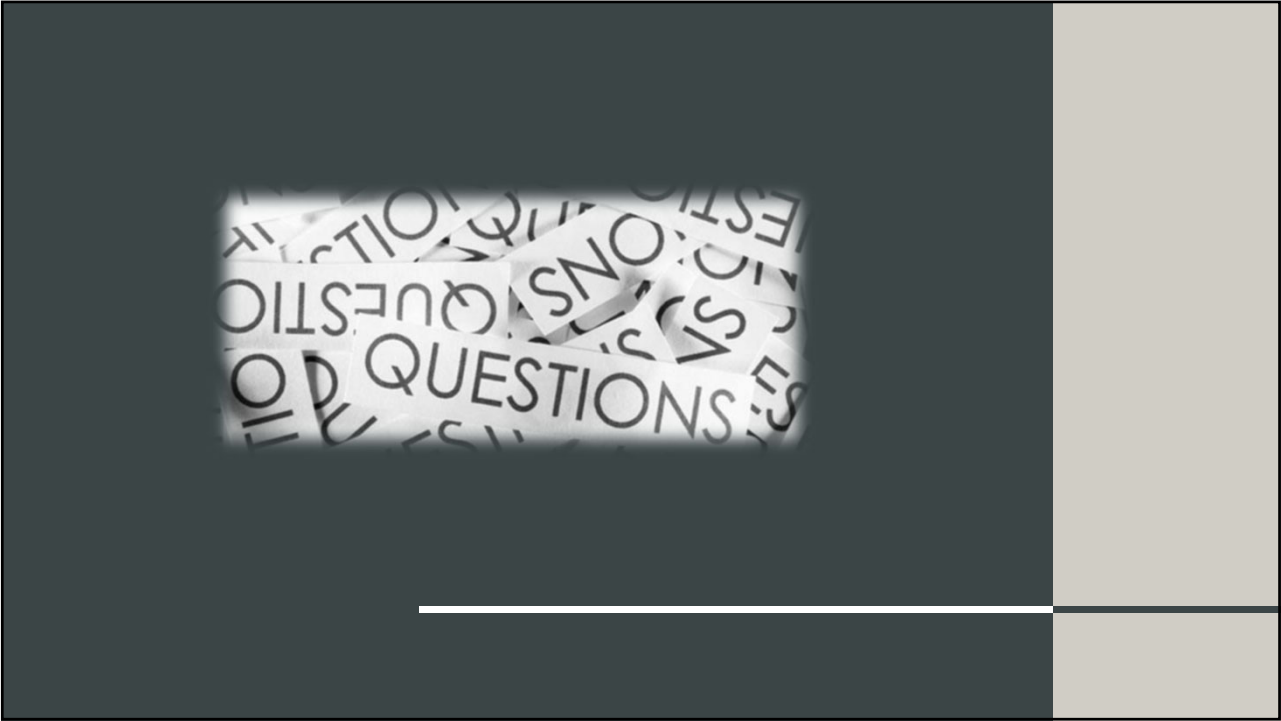
ITEM 4 - BASIN OPTIMIZATION YIELD STUDY - PREFERRED MODELING ALTERNATIVE AND IMPACTS TO SCHEDULE				9
Table 1. Revised Schedule for Preparation of the BOY Study				
Description	Duration	Original Schedule Date	Revised Schedule Date	
Task 1 - Model Scenario Development				
Presentation of Proposed Model Scenarios to TAC	6	1/7/2025	-	
TAC Recommendation Report	14	1/21/2025	-	
Watermaster Response Report	14	2/4/2025	-	
Recommendation & Response Reports discussed by WM Board at special meeting.	10	2/14/2025	-	
Task 2 - Numerical Modeling ¹				
Task 2.1 - Baseline Scenario	21	2/25/2025	6/2/2025 (s)	
Task 2.2 - Projects Scenario	28	3/25/2025	6/23/2025 (s)	
TAC review of Baseline and Projects	7	4/1/2025	8/5/2025 (m)	
TAC Recommendation Report	21	4/22/2025	8/26/2025 (d)	
Watermaster Response Report	21	5/13/2025	9/16/2025 (d)	
Recommendation & Response Reports discussed by WM Board	15	5/28/2025	9/24/2025 (m)	
Task 2.3 - Model Alternative Pumping Scenarios	30	6/27/2025	10/25/2025 (d)	
Task 4 - Basin Optimization Yield Study				
Task 4.1 - Draft BOY Study	45	8/11/2025	12/9/2025 (d)	
PAC & TAC Recommendation Reports	60	10/10/2025	2/7/2026 (d)	
Watermaster Response Report & revised draft BOY Study	21	10/31/2025	2/28/2026 (d)	
Recommendation & Response Reports discussed by Watermaster Board; Board provides direction on revised draft BOY Study	26	11/8/2025	3/25/2026 (m)	
Task 4.2 - Final BOY Study development following Watermaster Board review	28	12/6/2025	4/22/2026 (d)	
Watermaster Board Approval of Final BOY Study	28	12/12/2025	5/27/2026 (m)	

Estimation of the BOY Using the UWCD Periodic Evaluation Model Files to Run New Scenarios

BOY STUDY SCHEDULE

...is adoption of the BOYS at May 2026 WM Board meeting a reasonable alternative for completion of BOYS?





FOX CANYON GROUNDWATER MANAGEMENT AGENCY

LAS POSAS VALLEY WATERMASTER



MEMORANDUM

Date: April 10, 2025
To: Las Posas Valley Watermaster Policy Advisory Committee
From: Kudzai F. Kaseke, Assistant Groundwater Manager
Subject: Committee Consultation for Establishment of an Overuse Assessment for Las Posas Valley Basin.

Dear Las Posas Valley Watermaster Policy Advisory Committee (PAC):

The Las Posas Valley Adjudication Judgment (Judgment) defines “Overuse” as “a Use in Excess of that allowed under the Judgment.” (Judgment, §4.15.1) Generally, Overuse occurs when a Water Right Holder Uses Groundwater in excess of Annual Allocation; Annual Allocations are determined for each Water Year by Watermaster according to the Annual Allocation Calculation process set forth Exhibit D of the Judgment. (See also Judgment, § 4.2.) More specifically, the Judgment provides that Overuse occurs where

Use of Groundwater by a Party other than Calleguas that is not a Mutual Exclusive Shareholder (unless that Mutual Shareholder and its Mutual Water Company have agreed to the separate reporting of said Mutual Exclusive Shareholder’s Groundwater Use pursuant to Section 4.7.1) that either has no Annual Allocation or exceeds such Party’s Annual Allocation (inclusive of Annual Allocation derived from Transferred Allocation Basis or Carryover), any Carryover, and any Groundwater to which such Party is entitled pursuant to a Subscription Project” or “The aggregate Use of Allocated Groundwater by a Mutual Water Company’s Mutual Exclusive Shareholders (excluding those Mutual Exclusive Shareholders who have agreed with their Mutual Water Company to separately report their Groundwater Use pursuant to section 4.7.1) exceeds the Aggregate Mutual Supply.

(Judgement, §§ 4.15.1.1, 4.15.1.2.) The Judgment provides Water Right Holders several options to cure Overuse “in the Water Year [immediately] following the Water Year in which the Overuse occur[s].” (Judgment, § 4.15.2.) However, if a Water Right Holder fails to cure the Overuse as provided in the Judgment, then the Water Right Holder, Party, or Person shall be subject to an Overuse Assessment and/or injunctive relief, as the case may be. (Ibid.) “Failure to pay [an] Overuse Assessment will incur interest on the amount owed and further enforcement [],” as well as additional enforcement including injunctive relief and lien on the associated real property for unpaid Overuse Assessments. (Judgment, § 4.15.3.)

The Judgment requires Watermaster, with Committee Consultation, to establish the amount of the Overuse Assessment. (Judgment, § 4.15.3.) To date, Watermaster has not established the amount or rate of the Overuse Assessment. In compliance with the Judgment, Watermaster requests your Committee’s consultation and policy recommendations on Watermaster’s establishment of the Overuse Assessment, specifically the amount of the Overuse Assessment. Watermaster staff plan to bring an item and

F-2a - 20250410 Watermaster Memo regarding LPV Overuse Assessment_Revised

recommendation on the amount of the Overuse Assessment r to the Fox Canyon Groundwater Management Agency Board of Directors (acting as the Watermaster Board) at the May 28, 2025, meeting. Please provide feedback via the email below to the Watermaster by May 09, 2025.

Please contact me at 805 654 2010 or LPV.Watermaster@ventura.org with any questions or concerns.

Gene West, Chair
Las Posas Valley Basin Watermaster
800 S. Victoria Ave.
Ventura, CA 93009
Sent via email to: efwest2012@gmail.com

May X, 2025

Chair West:

On April 10, 2025, Watermaster sent the Las Posas Valley Basin Watermaster Policy Advisory Committee (PAC) a committee consultation for the establishment of an overuse assessment for Las Posas Valley Basin. The PAC discussed this issue at its regular meeting on April 17, 2025.

By unanimous vote of those present, the PAC recommends that the Watermaster establish an overuse assessment that meets the following criteria:

- The overuse assessment should be set at the Calleguas Tier 1 rate and pegged to any changes in the Calleguas Tier 1 rate. Calleguas updates its rates annually and posts them on the Calleguas website (<https://www.calleguas.com/your-water/rates-charges/>).
- Any extraction above a Water Rights Holder's allocation incurs the overuse assessment.
- The overuse assessment is not tiered: any extraction above the allocation incurs the same penalty.
- Overuse assessments, once collected in the Water Year following the year to cure, should be sequestered in a separate Watermaster account reserved for replenishment funds.

Should you, the Board, or your staff have any questions, please don't hesitate to contact me at iprichard@calleguas.com or 805.256.0949.

Sincerely,

Ian Prichard, Chair
Las Posas PAC

FOX CANYON GROUNDWATER MANAGEMENT AGENCY LAS POSAS VALLEY WATERMASTER



MEMORANDUM

Date: April 10, 2025
To: Las Posas Valley Watermaster Policy Advisory Committee
From: Kudzai F. Kaseke, Assistant Groundwater Manager
Subject: Committee Consultation on Surplus Watermaster Budget.

Dear Las Posas Valley Watermaster Policy Advisory Committee (PAC):

The Las Posas Valley Adjudication Judgment (Judgment), requires Watermaster following Committee Consultation, annually determine and prepare a Watermaster Budget. (Judgment, §7.5). Watermaster has held two Watermaster budget study sessions; February 27, 2025, and March 18, 2025. At the last budget study session, March 18, 2025, the Fox Canyon Groundwater Management Agency (FCGMA) Fiscal Committee directed staff to consult your committee for policy decisions regarding surplus Watermaster Budget. Suggestions include but are not limited to reducing future basin assessments and or keeping the surplus as a separate fund for replenishment water purposes etc.

Please provide policy recommendations to Watermaster either in writing or at the FCGMA Fiscal Committee meeting on May 06, 2025.

Please contact me at 805 654 2010 or LPV.Watermaster@ventura.org with any questions or concerns.

F-3b - DRAFT PAC Recommendation Report regarding Surplus Budget Dispensation

Gene West, Chair
Las Posas Valley Basin Watermaster
800 S. Victoria Ave.
Ventura, CA 93009
Sent via email to: efwest2012@gmail.com

May X, 2025

Chair West:

On April 10, 2025, Watermaster sent the Las Posas Valley Basin Watermaster Policy Advisory Committee (PAC) a committee consultation regarding the dispensation of surplus Watermaster budget. The PAC discussed this issue at its regular meetings on April 17 and May 1, 2025.

Recognizing the criticality of bringing in additional sources of water to fill the gap between historical pumping and the sustainable yield established by the Las Poasa Valley Basin Groundwater Management Plan, the PAC recommends that surplus Watermaster Budget be sequestered in a fund specifically for replenishment projects. For Fiscal Year 2024-25, this would mean charging the fourth quarter basin assessment, rather than forgoing it. The reasoning for establishing quarterly billing was, in part, to accommodate cash flow concerns over the course of growing seasons within each fiscal year. The same concern underpins the PAC recommendation to begin building a replenishment fund with surplus funds; using funds already budgeted for should be easier to accommodate than asking for larger amounts of additional funds later.

Should you, the Board, or your staff have any questions, please don't hesitate to contact me at iprichard@calleguas.com or 805.256.0949.

Sincerely,

Ian Prichard, Chair

Las Posas PAC

FROM: Las Posas Basin Policy Advisory Committee
Ian Prichard, Chair

TO: Las Posas Valley Basin Watermaster

DATE: April 25, 2025

SUBJECT: Clarification of Basin Optimization Yield Study Modeling Alternatives

The LPV PAC has met and discussed the proposed Basin Optimization Yield Study (BOYS) modeling alternatives per the Watermaster's April 3, 2025 request for consultation. The PAC discussions resulted in the following comments and questions:

- The PAC concurs with the Watermaster (and Dudek) that the alternative providing for the use of the *Estimation of the BOY Using the UWCD Periodic Evaluation Model Files to Run New Scenarios* is the most favorable approach.
- The PAC recognizes that the BOYS will be an important management tool for the Watermaster and will aid in the development of a groundwater extractions ramp-down scheme that has the potential to impact all stakeholders in the basin. With that understanding, the PAC would prefer the model used for the BOYS not be just "good enough" or what's most expedient, but rather be based on our latest understanding of the hydrogeologic conditions in the basin.
- The PAC has considered the pros and cons of the using the *UWCD Periodic Evaluation Model Files* in the BOYS and would like to explore the potential of augmenting that approach to better address the key policy questions facing the PAC and Watermaster. Committee members debated the merits of using the periodic evaluation model files without modification and alternatively augmenting those model files to address key concerns recognized during the preparation of the 5-Year Periodic Evaluation.
- The creation of a completely new groundwater model for the WLPMA was determined to be a costly alternative and had unacceptable impacts to the timeline for completion of the BOYS. However, using the pre-existing model files provides a major jumpstart to the modeling effort. The PAC would like to explore the cost and schedule impacts to upgrading the periodic model to address the following topics:
 - Extension of the modeling period to 2024 (instead of 1979)
 - The Somis fault was changed from a NO FLOW to GENERAL HEAD BOUNDARY for the periodic evaluation, but the model was not recalibrated. In-lieu water delivery projects are proposed in the vicinity of that fault and a more refined understanding of how the water levels would respond with these revised assumptions about the fault are important.
 - Perform the model recalibration, as well as the model validation, sensitivity, and uncertainty analyses needed to support the model. The Dudek memorandum dated March 31, 2025 reported that the necessary documentation of the periodic evaluation model was not available. The PAC recommends that this deficiency be eliminated for any model used in the BOYS. These technical evaluations of the model can make the process of fostering stakeholder acceptance a more straight-forward endeavor.

We appreciate the Watermaster considering our comments and request that Dudek be tasked to

F-4 - PAC Memo to WM regarding WLPMA GW Model

address our comments regarding the feasibility and potential fiscal and schedule impacts associated with our requests. The PAC understands that this approach to augmenting the periodic evaluation model may impact the BOYS schedule and have a monetary impact but would appreciate a clearer understanding of those impacts as we prepare our Recommendation Report.

As always, please do not hesitate to reach out to the PAC should our comments generate additional questions from the Watermaster or Dudek.

Sincerely,

Ian Prichard

TRANSFER REQUEST FORM**LAS POSAS VALLEY BASIN WATERMASTER**

Please include an application fee according to the fee schedule posted on the Watermaster website: **[WEBSITE]**

Make check out to: Las Posas Valley Basin Watermaster

Mail to: Las Posas Valley Basin Watermaster, Ventura County Government Center Administration Building,
Watershed Protection District, 800 South Victoria Ave., Ventura, California 93009-1610

Email to: FCGMA@ventura.org

Call Watermaster Administrative staff at 805-654-2014 with questions.

TYPE OF TRANSFER

☐ Lease

☐ Permanent Transfer

☐ Transfer of Carryover

LEASES	
Lessor WMID: _____	Lessee WMID: _____ <input type="checkbox"/> Requesting New WMID
Name of Lessor: _____	Name of Lessee: _____
Lessor Contact Address: _____ _____ [Street Address] _____ [City], _____ [State] _____ [Zip Code] _____ [Phone Number] _____ [Email]	Lessee Contact Address: _____ _____ [Street Address] _____ [City], _____ [State] _____ [Zip Code] _____ [Phone Number] _____ [Email]
Lessor APN(s) [APN(s) within WMID]: _____	Lessee APN(s) [APN(s) within WMID or to be included within new WMID]: _____
Lessor Point of Extraction: <input type="checkbox"/> Private Well(s) Identify Well Nos.: _____ <input type="checkbox"/> Mutual Water Company Identify: _____	Lessee Point of Extraction: <input type="checkbox"/> Private Well(s) Identify Well Nos.: _____ <input type="checkbox"/> Mutual Water Company Identify: _____
Amount of Allocation Basis Leased: _____ AFY	
Type of Allocation Leased: <input type="checkbox"/> Base Agricultural <input type="checkbox"/> Supplemental Agricultural <input type="checkbox"/> Commercial <input type="checkbox"/> WWD	
Term of Lease: _____ Years _____ Months Commencing: _____ [Date]	
We acknowledge that Watermaster's approval, and our acceptance of any restrictions or conditions of approval imposed by Watermaster, are conditions precedent to the effectiveness of the Lease. Lessor's Initials: _____ Lessee's Initials: _____	
If approved, during the term of the Lease, I acknowledge that I will remain responsible for all payments of Basin Assessments and Overuse Penalty Assessments. Lessor's Initials: _____	

PERMANENT TRANSFERS (Allocation Basis or Carryover)	
Seller WMID: _____	Buyer WMID: _____ <input type="checkbox"/> Requesting new WMID
Name of Seller: _____	Name of Buyer: _____
Seller Contact Address: _____ [Street Address] _____ [City], ____ [State] _____ [Zip Code] _____ [Phone Number] _____ [Email]	Buyer Contact Address: _____ [Street Address] _____ [City], ____ [State] _____ [Zip Code] _____ [Phone Number] _____ [Email]
Seller APN(s) [APN(s) within WMID]: _____	Buyer APN(s) [APN(s) within WMID or to be included within new WMID]: _____
Seller Point of Extraction: <input type="checkbox"/> Private Well(s) Identify Well Nos.: _____ <input type="checkbox"/> Mutual Water Company Identify: _____	Buyer Point of Extraction: <input type="checkbox"/> Private Well(s) Identify Well Nos.: _____ <input type="checkbox"/> Mutual Water Company Identify: _____
Seller Allocation Basis BEFORE Transfer: _____ AFY	Buyer Allocation Basis BEFORE Transfer: _____ AFY
Amount of Allocation Basis to be Sold: _____ AFY	Amount of Carryover to be Sold: _____ AF
Type of Allocation Transferred: <input type="checkbox"/> Base Agricultural <input type="checkbox"/> Supplemental Agricultural <input type="checkbox"/> Commercial <input type="checkbox"/> WWD	
Sale in connection with Conveyance of (Portion of a) Parcel? <input type="checkbox"/> Yes <input type="checkbox"/> No Identify APN(s) of Parcel(s) Being Conveyed: _____	
We acknowledge that Watermaster's approval, and our acceptance of any restrictions or conditions of approval imposed by Watermaster, are conditions precedent to the effectiveness of the Transfer. Seller's Initials: _____ Buyer's Initials: _____	
<input type="checkbox"/> A copy of the deed is enclosed (if Permanent Transfer is in connection with Sale of a [Portion of a] Parcel)	
<input type="checkbox"/> A copy of the Seller's Water Rights Grant Deed is enclosed.	
<input type="checkbox"/> A copy of the Buyer's Water Rights Grant Deed is enclosed.	

MAPS: Please include a map of the area where the water was used by the Transferor and a map of the area where the water is intended to be used by the Transferee. Include locations of production facilities involved in or affected by the Transfer.

SIGNATURES

I understand and agree to abide by the terms of the Las Posas Valley Basin Adjudication Judgment. I swear under penalty of perjury that the information provided on this Transfer Request Form is correct to the best of my knowledge, that I am authorized to enter into this Transfer on behalf of the party indicated below and to bind that party on whose behalf I am signing, that signing this Transfer Request Form is within the scope of my authority, and that the signature below, whether original, electronic, or photocopied, is authorized and valid, and is affixed with the intent to be enforceable. I understand that it is my responsibility to notify Watermaster of any changes in any of the information provided on this form as soon as practicable. I also understand that additional information may be required if there is a suspected potential for an Undesirable Result as defined in the Judgment.

Transferor _____

Signature _____ Date _____

Title _____

Transferee _____

Signature _____ Date _____

Title _____

To be completed by Watermaster:

Watermaster Approval _____ Date _____

Fees Required _____