

**Resolution No. 2016-02**  
**of the**  
**Fox Canyon Groundwater Management Agency**

**INITIATING A REQUEST TO THE CALIFORNIA DEPARTMENT OF WATER  
RESOURCES TO MODIFY THE BULLETIN 118 GROUNDWATER BASIN  
BOUNDARIES FOR THE LAS POSAS BASIN, PLEASANT VALLEY BASIN  
AND OXNARD SUBBASIN**

**WHEREAS**, Fox Canyon Groundwater Management Agency (Agency) was formed for the purpose of preserving the groundwater resources within its statutory boundaries and has such powers granted by its enabling legislation and such other powers as are reasonably implied and necessary and proper to carry out its objectives and purposes; and

**WHEREAS**, the Sustainable Groundwater Management Act (SGMA) requires that groundwater basins within California be sustainably managed; and

**WHEREAS**, the Agency's statutory boundaries overlie the following groundwater basins identified and defined in the Department of Water Resources (DWR) report entitled "California's Groundwater: Bulletin 118" updated in 2003 (Bulletin 118): the Arroyo Santa Rosa Valley Basin, the Las Posas Valley Basin, the Oxnard Subbasin of the Santa Clara River Valley Basin, and the Pleasant Valley Basin; and

**WHEREAS**, SGMA provides that unless other basin boundaries are established, a basin's boundaries shall be as identified in Bulletin 118; and

**WHEREAS**, SGMA allows a local agency to request that DWR modify the boundaries of a basin; and

**WHEREAS**, the Agency is aware of scientific evidence supporting a modification of the shared boundary between the Las Posas Valley Basin (DWR Basin No. 4-08) and the Pleasant Valley Basin (DWR Basin No. 4-06), and

**WHEREAS**, a jurisdictional modification of the shared boundary between the Las Posas Valley Basin (DWR Basin No. 4-08) and the Oxnard Subbasin (DWR Subbasin No. 4-4.02) as shown in Exhibits A and B will promote sustainable groundwater management in each basin; and

**WHEREAS**, the development and implementation of the Groundwater Sustainability Plan for each of the basins described in this Resolution will be coordinated so that each Plan does not adversely affect the ability of an adjacent basin to implement their Plan or impede achievement of sustainability goals in an adjacent basin.

**WHEREAS**, a request that DWR revise the boundaries of a basin is exempt from the California Environmental Quality Act (CEQA) pursuant to Water Code § 10728.6, and CEQA Guidelines §§ 15061(b)(3), 15307 and 15308; and

**NOW, THEREFORE, BE IT RESOLVED** that the FCGMA Board of Directors finds, determines and declares that:

1. The western portion of the southern boundary of the Las Posas Valley Basin (Bulletin 118, DWR Basin No. 4-08) shared with the Pleasant Valley Basin (DWR Basin No. 4-06), should be modified to align with the Springville fault as mapped by the United States Geological Survey, as shown in Exhibits A and B;
2. The western boundary of the Las Posas Valley Basin (Bulletin 118, DWR Basin No. 4-08) shared with the Oxnard Basin (DWR Subbasin No. 4-4.02), should be modified to extend northward from the western end of the Springville fault to generally follow the topographic change in slope associated with the Wright Road fault while also respecting the integrity of property lines and a property's groundwater source until it connects with the northern boundary of the Las Posas Valley Basin as shown in Exhibits A and B;
3. The Executive Officer is authorized to submit on behalf of the Agency a request for DWR to modify basin boundaries as shown in the attached maps (Exhibits A and B) in accordance with this Resolution; and
4. The Executive Officer is authorized to file a Notice of Exemption from CEQA.

On motion by Director Craven, and seconded by Director Bennett, the foregoing resolution was passed and adopted on March 23, 2016 by the following vote.

AYES – Chair Maulhardt, Craven, Bennett, West, and Borchardt

NOES – ☐

ABSTAINS – ☐

ABSENT – ☐

By:   
Lynn E. Maulhardt, Chair, Board of Directors  
Fox Canyon Groundwater Management Agency

ATTEST: I hereby certify that the above is a true and correct copy of Resolution No. 2016-02.

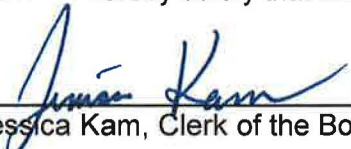
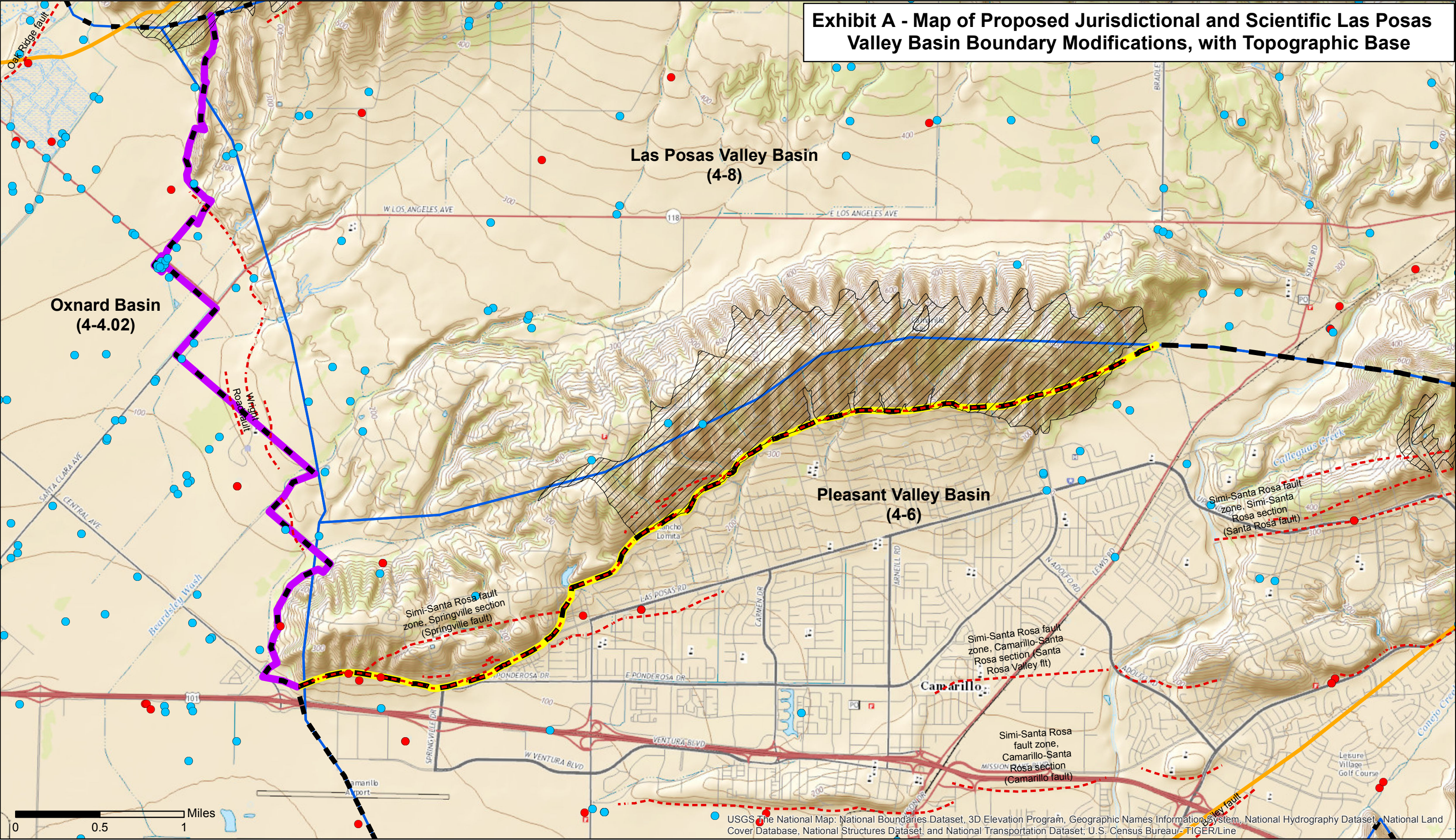
By:   
Jessica Kam, Clerk of the Board

Exhibit A – Map of Proposed Jurisdictional and Scientific Las Posas Valley Basin Boundary Modifications, with Topographic Base

Exhibit B – Map of Proposed Jurisdictional and Scientific Las Posas Valley Basin Boundary Modifications, with Aerial Photo Base



Exhibit A - Map of Proposed Jurisdictional and Scientific Las Posas Valley Basin Boundary Modifications, with Topographic Base



**Legend**

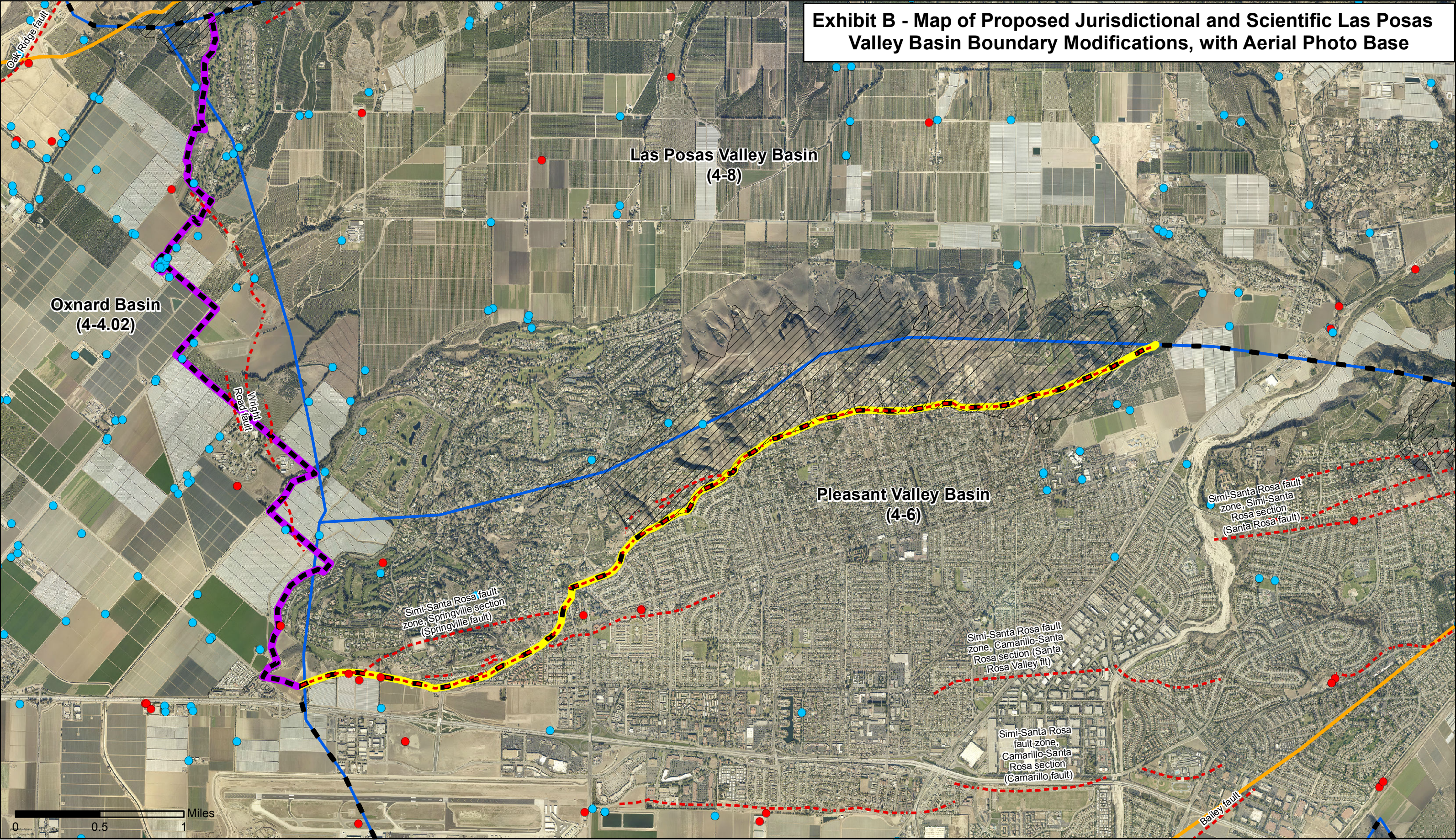
- USGS Quaternary Faults
- Lower Aquifer System Outcrop
- Fox Canyon Groundwater Management Agency Boundary
- Bulletin 118 Ground Water Basins (Current)
- B118 Groundwater Basin Boundary (Proposed)
- B118 Groundwater Basin Boundary (Proposed Jurisdictional Modification)
- B118 Groundwater Basin Boundary (Proposed Scientific Modification)
- Inactive Wells
- Active Wells

DISCLAIMER: The information contained herein was created by the Ventura County Watershed Protection District for use by the Fox Canyon Groundwater Management Agency. This map is an interpretation of the data that was available at the time that the map was prepared. No warranty is made as to the accuracy of the data shown and Ventura County Watershed Protection District and Fox Canyon Groundwater Management Agency expressly disclaim liability for any errors or omissions in the contents of these maps.





Exhibit B - Map of Proposed Jurisdictional and Scientific Las Posas Valley Basin Boundary Modifications, with Aerial Photo Base



Legend

- USGS Quaternary Faults
- Lower Aquifer System Outcrop
- Fox Canyon Groundwater Management Agency Boundary
- Bulletin 118 Ground Water Basins (Current)
- B118 Groundwater Basin Boundary (Proposed)
- B118 Groundwater Basin Boundary (Proposed Jurisdictional Modification)
- B118 Groundwater Basin Boundary (Proposed Scientific Modification)
- Inactive Wells
- Active Wells

DISCLAIMER: The information contained herein was created by the Ventura County Watershed Protection District for use by the Fox Canyon Groundwater Management Agency. This map is an interpretation of the data that was available at the time that the map was prepared. No warranty is made as to the accuracy of the data shown and Ventura County Watershed Protection District and Fox Canyon Groundwater Management Agency expressly disclaim liability for any errors or omissions in the contents of these maps.

